



myphotobook



WWW.MAKEUP-AFFAIR.COM

Elane Paulino - Visual Artist & Make up & Hair Stylist - June 2014

# MOODBOARD

by Elane Paulino - Visual Artist & Make up & Hair Stylist





**Final Make-up and Hair Stylist Project 2015**

**VOGUE**

**"make up, the wings of beauty".**



## **LIST OF CONTENTS**

- 1-4. INSPIRATION & IMAGES**
- 5. LIST OF CONTENTS**
- 6. COLOR AND TEXTURE**
- 7. INSPIRATION/PASSION TEXT & POEM**
- 8/9. EYESHADOW & FAKE LASHES**
- 10. EYESHADOW ACCENT & COLORS  
OPTIONS**
- 11. EYELINER & EYEBROW**
- 12/13. ANATOMY, FOUNDATION &  
CONTORING**
- 14/15. HIGHLIGHTS**
- 16/17. LIPS & CHEEKS**
- 18/19. HAIRSTYLING & INSPIRATION**
- 20/21. SOURCE OF IDEAS:  
FASHION, ART & NATURE**
- 22. BODY ILLUSION**
- 23. DRESSES & MODEL DESCRIPTION**
- 24. DESIGN, PRODUCTION, LINKS,  
WWW & THANK'S**

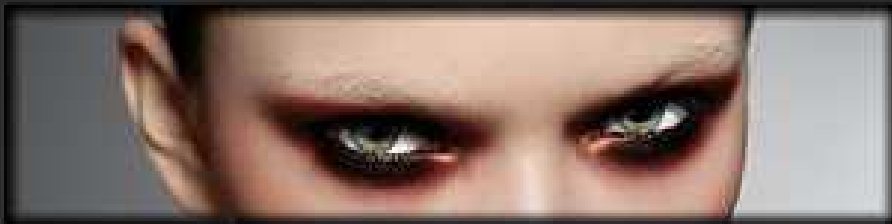


## Inspiration:

Nike flew around battle fields rewarding the victors with glory and fame, symbolized by a crown of Laurel leaves. Like a woman sharing her Beauty with the move of her wings, make-up is the tool. Every woman can feel like Nike, goddess of Victory.

*"We are not angels, we are merely sophisticated apes. Yet we feel like angels trapped inside the bodies of beasts, craving transcendence and all the time trying to spread our wings and fly off, and it's really a very odd predicament to be in, if you think about it."*

Vilayanur S. Ramachandran



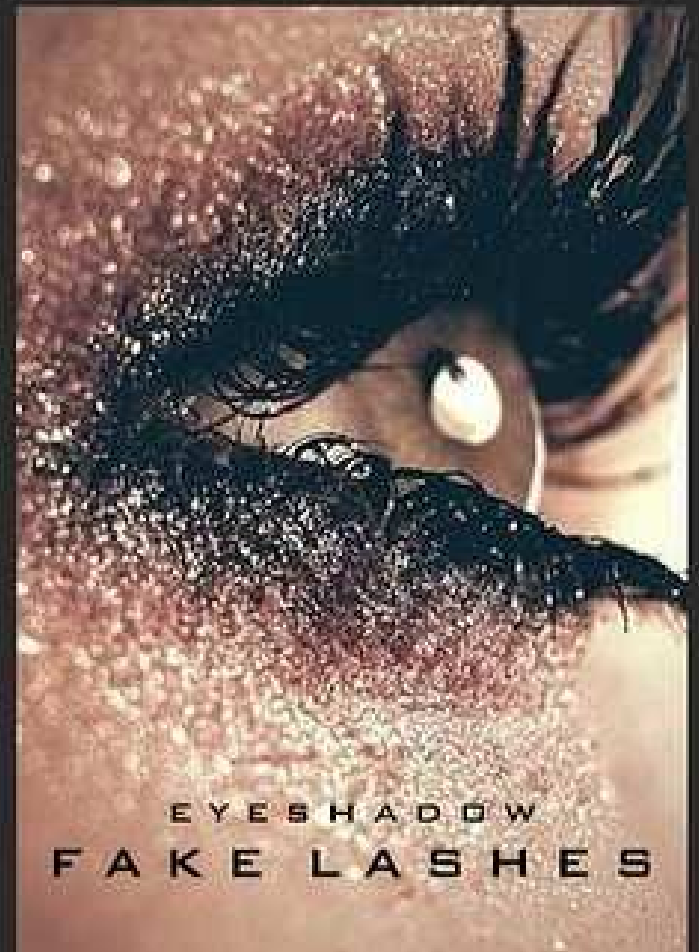
*"If you were born without wings, do nothing to prevent them from growing." — Coco Chanel*

## EYES

THE BROW BONE WILL GET A CHERRY  
COLOR

INSIDE EYES/ NOSE WALLS: CHROME,  
GRADIENT TRANSITION BROWN TO BLACK.  
I WILL ACCENT THE EYESLIDS FROM DARK  
BORDEAUX TO BLUE VELVET.

OUTSIDE EYES: BROWN, STRONG BLACK  
EDGED



EYESHADOW



COLORS



EYELINE: FOLLOWS THE EYELASH WREATH, SMOOTH AND LONG, ELEGANT LIKE A WING.

EYELINER & EYEBROW

EYEBROW: IN DARK BROWN AND BLACK, WITH HINT OF CHROME. FOLLOWING THE SWEEPING WINGS OF THE EYES.





ANATOMY, FOUNDATION &  
CONTOURING

THE SOUL HAS ILLUSIONS AS THE BIRD HAS WINGS: IT IS SUPPORTED BY THEM.  
VICTOR HUGO

ANATOMY: THE CHEEK BONES HAVE TO BE POINTED BY CONTOURING. AS WELL THE NOSE WALLS, TEMPLES HAVE TO BE HIGH DEFINE.

THE FOUNDATION SHOULD GIVE A SPECIAL LOOK AND CREATES THE IDEAL ILLUSION. THE CONTRAST BETWEEN THE DARK EYE MAKE-UP AND THE SLICED EMPHASIZE THE CHEEK BONES, SET THE





NO BIRD SOARS TOO HIGH IF HE SOARS WITH  
HIS OWN WINGS.  
WILLIAM BLAKE

HIGHLIGHT  
THE CHEEK BONES, ARCH BROW  
BONE, NOSE BRIDGE, LIPS CONTOUR  
HAS TO BE STRESSED OR LUMINOUS  
HIGHLIGHTENED.





When we are touched by something it's as if we're being brushed by an angel's wings.

Rita Dove



FULL, CHERRY COLORED,  
SCULPTED LIPPS AND  
BORDEAUX COLORED



SOURCE  
OF IDEAS

FASHION  
ART &  
NATURE





#### TEXTUR/SUBJECTS & FEELING

""THE DRESS IS INTENDED TO BE AIRY, SOPHISTICATED, CHARMING, MAGNIFICENT, ELEGANTE, LIGHT AS A FEATHER

MODEL: I IMAGINE A MODEL WITH INTERESTING LOOK. I WOULD PREFER A MODEL WITH SMALL THIN FACE, DELICATE AND LONG NOSE. GORGEOUS, BUT AT SAMETIME CHANGEABLE.





MAKE-UP/ HAIRSTYLISTIN: ELIANE PAULINO  
DESIGN& PRODUCTION: ELIANE PAULINO  
[WWW.MAKEUP-AFFAIR.COM](http://WWW.MAKEUP-AFFAIR.COM)  
LINKS: PINTEREST, WIKI, GOOGLE, ETC...

SPEZIAL THANKS TO MY TEACHERS TOLBA &  
STEFAN (BLUSHHOUR)  
AND TO MY DEAR HUSBAND FRANK.